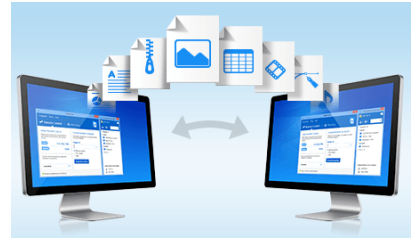


# JuLI™ Stage TeamViewer User Guide

## TeamViewer

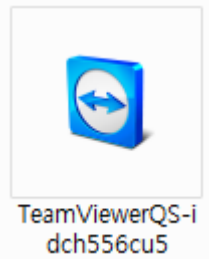
TeamViewer is the All-In-One solution for remote access and support over the internet. It connects to any computer or server around the world within a few seconds. TeamViewer Quick Support is a simple and small customer module that runs immediately without installation.

If you need help about using JuLI™ Stage, NanoEnTek can help you immediately with the TeamViewer program. NanoEnTek can control computers remotely as if the users were sitting right in front of it. It is possible to support demo and technical service.

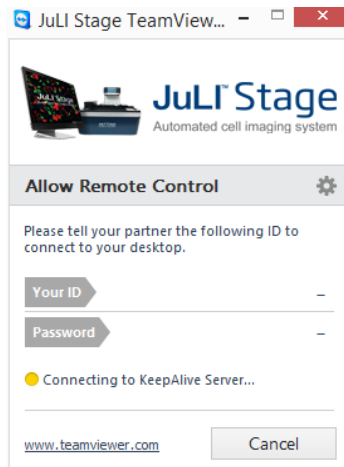


## How to start 'Teamviewer Quick Support'

1. Double click 'TeamViewerQS-idch556cu5' file on the desktop to run the TeamViewer program.



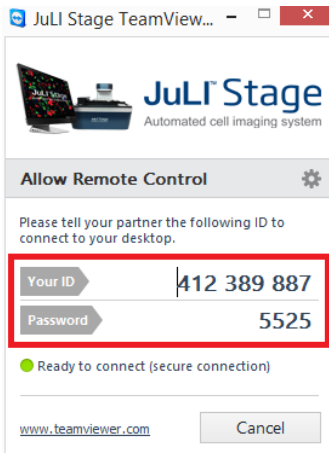
2. It will activate the 'TeamViewer QuickSupport'.



# JuLI™ Stage TeamViewer User Guide

## How to start 'Teamviewer Quick Support'

- When 'Your ID' and 'Password' appear, **tell your partner the following ID and password** to connect to your desktop.
  - ※ When you access TeamViewer, the password will be changed in every time. You don't have to concern about the changing password.



- Your partner will connect to your computer with your ID and password. If the connection completed, TeamViewer will be pop-up on the right side of your desktop. Now, our technical support team will control your desktop and solve the problems. Click the exit button to finish the connection.

